



GAT MONTHLY MEMBERSHIP PROGRESS REPORT

Results as of: 3/31/2022

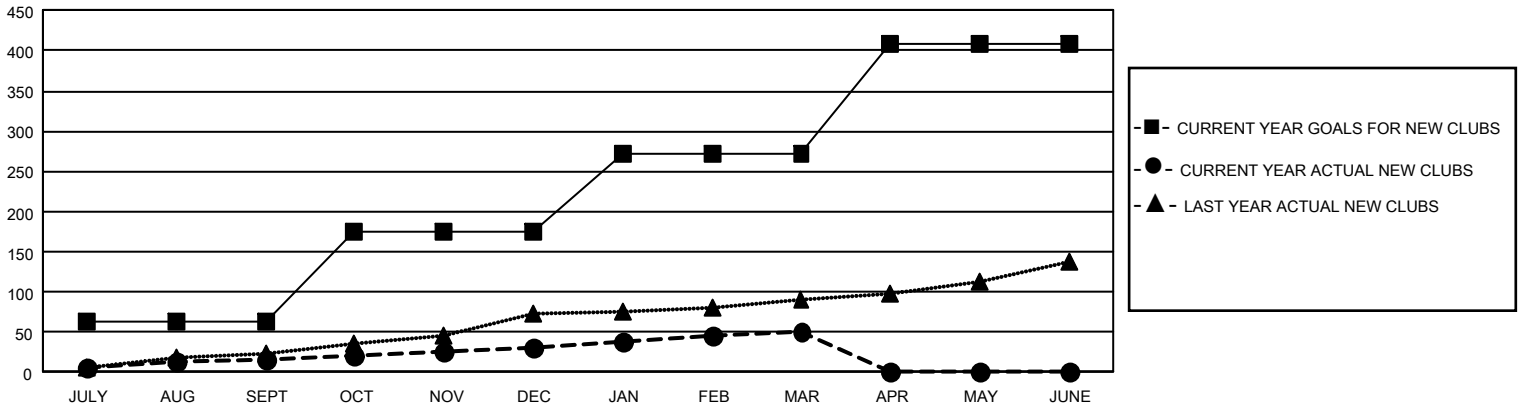
GAT Constitutional Area 1

REPORT DOES NOT INCLUDE CLUBS IN UNDISTRICTED AREAS.

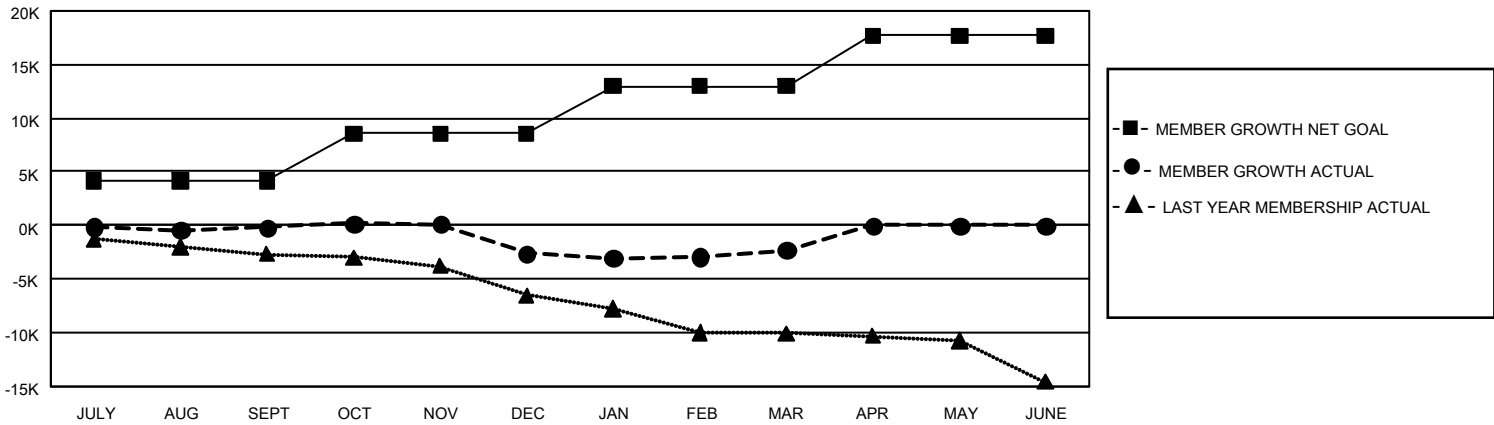
Clubs			
RESULTS FOR 2021-2022			
QUARTER	NEW CLUB GOAL	NEW CLUBS	DROPPED CLUBS
JULY/AUG/SEPT	192	16	127
OCT/NOV/DEC	330	16	114
JAN/FEB/MAR	294	18	55
APR/MAY/JUNE	411	0	0

Members			
RESULTS FOR 2021-2022			
QUARTER	MEMBER GROWTH NET GOAL	MEMBER GROWTH ACTUAL	DROPPED MEMBERS ACTUAL (including transfers)
JULY/AUG/SEPT	4133	8,772	7,719
OCT/NOV/DEC	4409	7,892	9,582
JAN/FEB/MAR	4451	8,201	6,911
APR/MAY/JUNE	4727	0	0

GOALS AND ACTUAL NEW CLUBS CUMULATIVE



GOALS AND ACTUAL MEMBERS CUMULATIVE



DROPPED CLUBS: 296	
DROPPED MEMBERS	
DECEASED	3,771
CLUB CANCELLED	2,116
OTHER	18,323
TOTAL	24,210

5,576 CLUBS OF 10,676 ADDED 1 OR MORE NEW MEMBERS

[CLICK HERE FOR CUMULATIVE MEMBERSHIP DATA](#)

GENDER DISTRIBUTION	
MALE	178,035 (64.92%)
FEMALE	96,125 (35.05%)
NON BINARY	6 (0.00%)
PREFER NOT TO ANSWER	52 (0.02%)
TOTAL FAMILY UNIT MEMBERS	52,757
FAMILY MEMBERS PAYING HALF DUES	27,121